



**FA0125CS**  
Satin Finish



**FA0225CS**  
Satin Finish

### General description

- Water fountains connected to the mains water supply, made of bacteriostatic AISI 304 stainless steel with a thickness of 0.8 mm, ensuring extreme protection against corrosion and vandalism. Satin finish.
- Suitable for high-traffic public environments such as schools, universities, training centers, airports, shopping centers, etc. Suitable for communal use.
- Very easy to connect to the drinking water supply, providing a constant supply of water at room temperature.
- These mains water fountains feature a contoured basin, specially designed to minimize splashing.
- Equipped with a chrome-plated brass cup filler, very robust and resistant to oxidation, with instant closure and adjustable water flow, with M3/8" thread.
- Rounded edges without sharp edges to prevent any user injury and offering maximum hygiene and very simple maintenance.
- Perforated flat drain, screwless, easy to clean and vandalism resistant.
- Recessed vertical water outlet of  $\varnothing 1\frac{1}{4}$ ".
- Supplied with flexible hose for connection to the mains water supply.
- Mounting elements supplied.

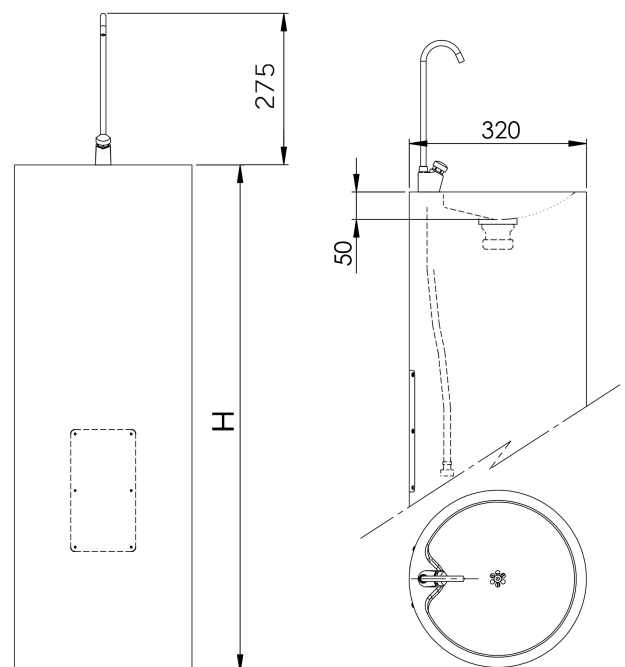
### Components and materials

- **FA00125CS:** Mains water fountain, 799mm in height, made of satin-finished AISI 304 stainless steel with a thickness of 0.8 mm.
- **FA00225CS:** Mains water fountain, 915mm in height, made of satin-finished AISI 304 stainless steel with a thickness of 0.8 mm.
- **BODY:** Made of satin-finished AISI 304 stainless steel with a thickness of 0.8 mm.
- **BASIN:** Made of AISI 304 stainless steel, directly recessed into the fountain body. It features a perforated flat drain, screwless, easy to clean, and vandalism resistant.
- **CUP FILLER:** Chrome-plated brass, with a push button also made of chrome-plated brass.
- **ACCESS DOOR:** Made of AISI 304 stainless steel with a thickness of 0.8 mm.

### Technical specifications

<b>Dimensions:</b>	$\varnothing 320 \times 799\text{mm}$ $\varnothing 320 \times 915\text{mm}$
<b>Stainless Steel thickness:</b>	0,8 mm
<b>Waste outlet :</b>	Vertical 1 1/4"
<b>Water Intel:</b>	M3/8"
<b>Net weight :</b>	9,0 Kg FA0125CS 9,6 Kg FA0225CS

### Dimensions



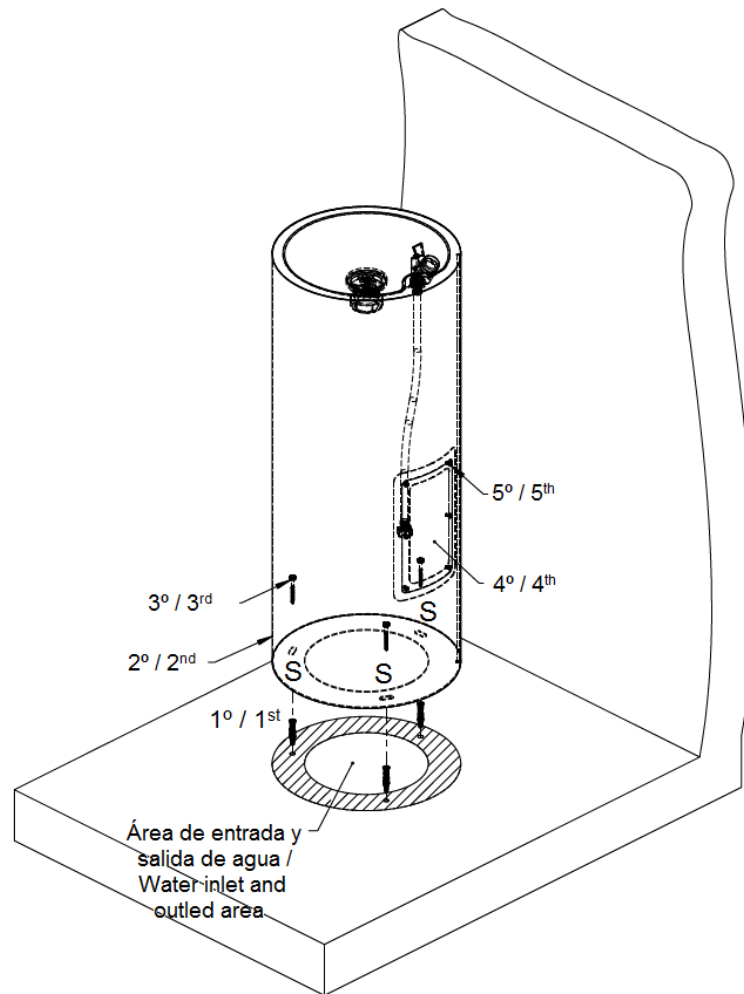
Dimensiones:  $\pm 4\%$

CODE	H (mm)
FA0125CS	799
FA0225CS	915

## Mounting

## Recommended installation heights

Secure the water fountain to the floor using the most appropriate screws for the type of flooring where the fountain is installed, through the corresponding holes located at the bottom of the fountain (points indicated by an "S" in the lower figure) and following the established order.



Mediclinics, S.A., reserves the right to make changes and/or modifications to the products and their specifications without prior notice

Revisión 04-24

© mediclinics S.A.

ISO 9001  
BUREAU VERITAS  
Certification

